

Modified standard jaw-blanks according to your specifications

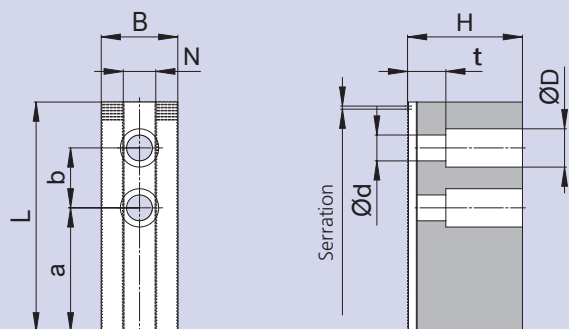
Reduced weight and / or tapering for small clamping diameters

Your benefits:

- You will quickly receive the right offer
- The jaws are made from blanks, which makes them inexpensive and available at short term
- Economical alternative to special jaws
- No machining is required on the clamping jaws by the customer
- Clamping diameter can be turned out by the customer on the machine under clamping pressure = best concentricity
- Clamping of small workpiece diameters due to tapered clamping surface
- If you have any questions in advance, please contact backen@smw-autoblok.de

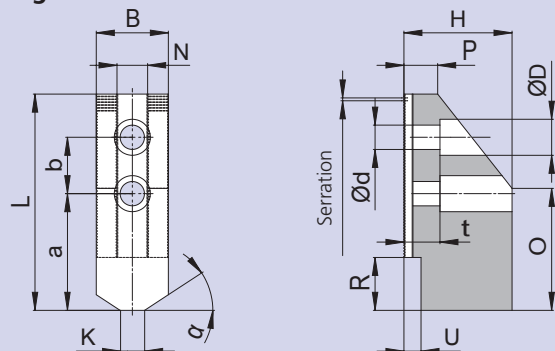
interactive PDF available
at www.smw-autoblok.de

Soft top jaw-blanks



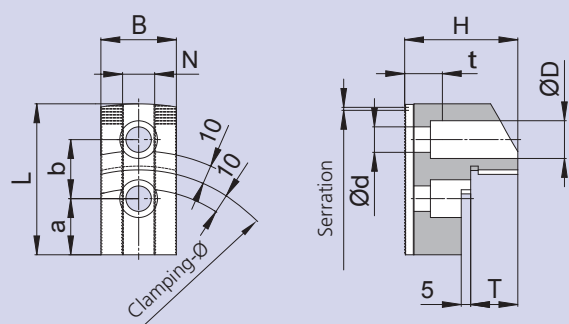
Dimensions					
a		mm	H		mm
b		mm	L		mm
B		mm	N		mm
d		mm	t		mm
D		mm			
Jaw serration / material (please mark)					
		1/16" x 90°			1.5 x 60°
		3/32" x 90°			3 x 60°
Material		Steel		Alu	
Quantity in pieces					
Chuck manufacturer					
Chuck type + size					

Soft top jaw-blanks weight reduced



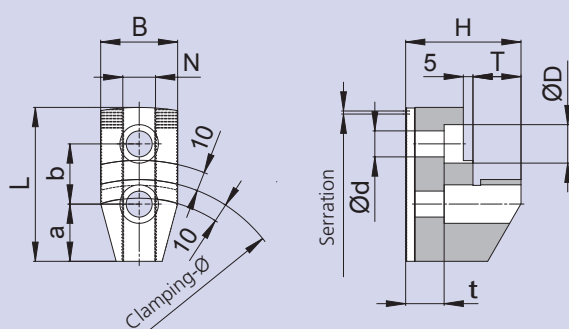
Dimensions					
a		mm	K		mm
b		mm	O		mm
B		mm	P		mm
d		mm	R		mm
D		mm	t		mm
H		mm	U		mm
L		mm	α		Grad
N		mm			
Jaw serration / material (please mark)					
		1/16" x 90°			1.5 x 60°
		3/32" x 90°			3 x 60°
Material		Steel		Alu	
Quantity in pieces					
Chuck manufacturer					
Chuck type + size					

Soft top jaws for OD clamping



Dimensions					
a		mm	L		mm
b		mm	N		mm
B		mm	t		mm
d		mm	T		mm
D		mm	Clamping-Ø		mm
H		mm	Workpiece-Ø		mm
Jaw serration / material (please mark)					
		1/16" x 90°			1.5 x 60°
		3/32" x 90°			3 x 60°
Material		Steel		Alu	
Quantity in pieces					
Chuck manufacturer					
Chuck type + size					

Soft top jaws for ID clamping



Dimensions					
a		mm	L		mm
b		mm	N		mm
B		mm	t		mm
d		mm	T		mm
D		mm	Clamping-Ø Workpiece-Ø		mm
H		mm			mm
Jaw serration / material (please mark)					
		1/16" x 90°			1.5 x 60°
		3/32" x 90°			3 x 60°
Material		Steel		Alu	
Quantity in pieces					
Chuck manufacturer					
Chuck type + size					